

Arcticmaster Report

6 Day trial period

System off 15th – 20th March 2009

System on 21st – 26th March 2009

Site Reference:

Walmart Manilla

Date: 2/04/2009

Unit Reference:

kWh Recorded Over trial period					
Arcticmaster OFF			Arcticmaster ON		
Total Amp Consumption	39,406	Amps	Total Amps Consumption	29,792	Amps
total Consumption	1,888	kWh	total Consumption	1,428	kWh
Fan Consumption	N/A	kWh	Fan Consumption	N/A	kWh
Compressor Consumption	1,888	kWh	Compressor Consumption	1,428	kWh
Weekly Consumption	1,888	kWh	Weekly Consumption	1,428	kWh

Projected annual consumption and Savings		
Projected Annual Consumption	75,376	kWh
Projected Annual Savings	15,060	kWh
Projected kVa Savings	\$0	
SAVINGS	24.40%	
1st Year Projected Annual Savings	\$2,560	Savings incorporate a 5% cost in electricity yearly
2nd Year Projected Annual Savings	\$2,688	
3rd Year Projected Annual Savings	\$2,823	
4th Year Projected Annual Savings	\$2,964	
5th Year Projected Annual Savings	\$3,112	
Average Annual Savings	\$2,829	over 5 years
Average Monthly savings	\$236	over 5 years
Total 5 year Projected Savings	\$14,147	

Project cost	\$3,966
--------------	---------

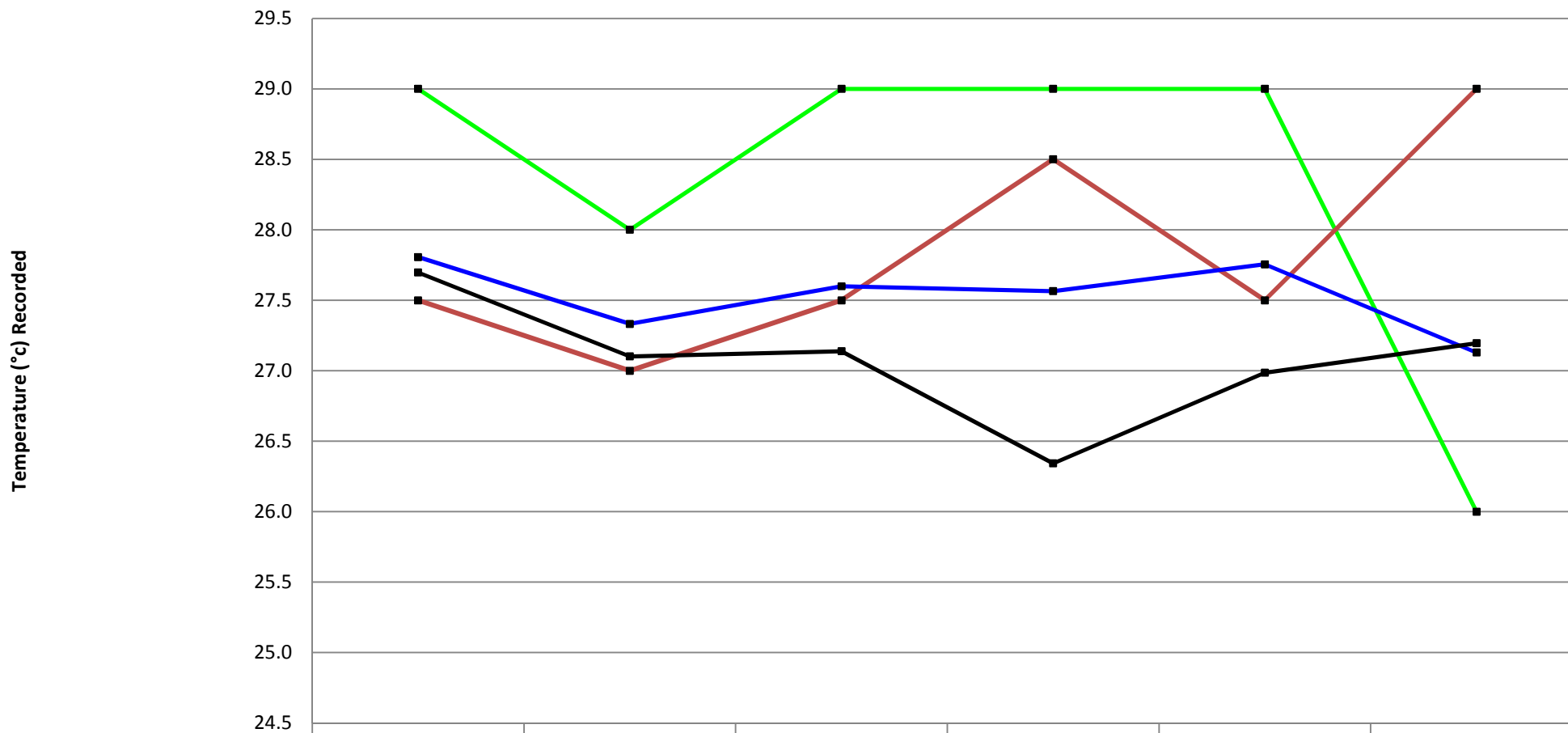
Return Of Investment and pay back periods	
Average Annual Savings	\$2,829
Total savings over 5 years (5% power cost increase per year)	\$14,147
ROI %v (when using average yearly savings)	71%
Pay back period	Months 17

Environmental Impact Projections		
kWh reduction Per Year	15,060	kWh
Greenhouse gas reduction per year	12,187	Kg
energy saved is Equivalent To Planting X number acres of trees per year	2.4	Acres
energy saved is Equivalent amount of power to power x number of houses per year per year	5	Houses

Client Information		
Cost Per kWh	\$0.17	\$
Compressor capacity	30 kW Electrical	Kw
Annual kWh Use	0	kWh
Hours Per day of AC operation	11	hrs
Days Per week of AC operation	7	days
Weeks Per Year of AC operation	52	weeks
Cost to operate AC per year	\$2,560.20	\$
% of kWh Savings per year	24.40%	
Savings Per Year (\$ average over 5 years)	\$2,829	\$
Total savings over 5 years (5% power cost increase per year)	\$14,147	\$

Daily Power Consumption, Indoor Temperatures & Ambient Temperatures							
Arcticmaster OFF				Arcticmaster ON			
Date	Kwh	R/A Temp	Ambient temp	Date	Kwh	R/A Temp	Ambient temp
15/03/2009	326	27.7	27.5	21/03/2009	189	27.8	29.0
16/03/2009	284	27.1	27.0	22/03/2009	236	27.3	28.0
17/03/2009	358	27.1	27.5	23/03/2009	239	27.6	29.0
18/03/2009	253	26.3	28.5	24/03/2009	239	27.6	29.0
19/03/2009	346	27.0	27.5	25/03/2009	234	27.8	29.0
20/03/2009	321	27.2	29.0	26/03/2009	291	27.1	26.0
AVERAGE	315	27.1	27.8		238	27.5	28.3

Daily Ambient And Return Air Temperature recorded over the 6 day trial period

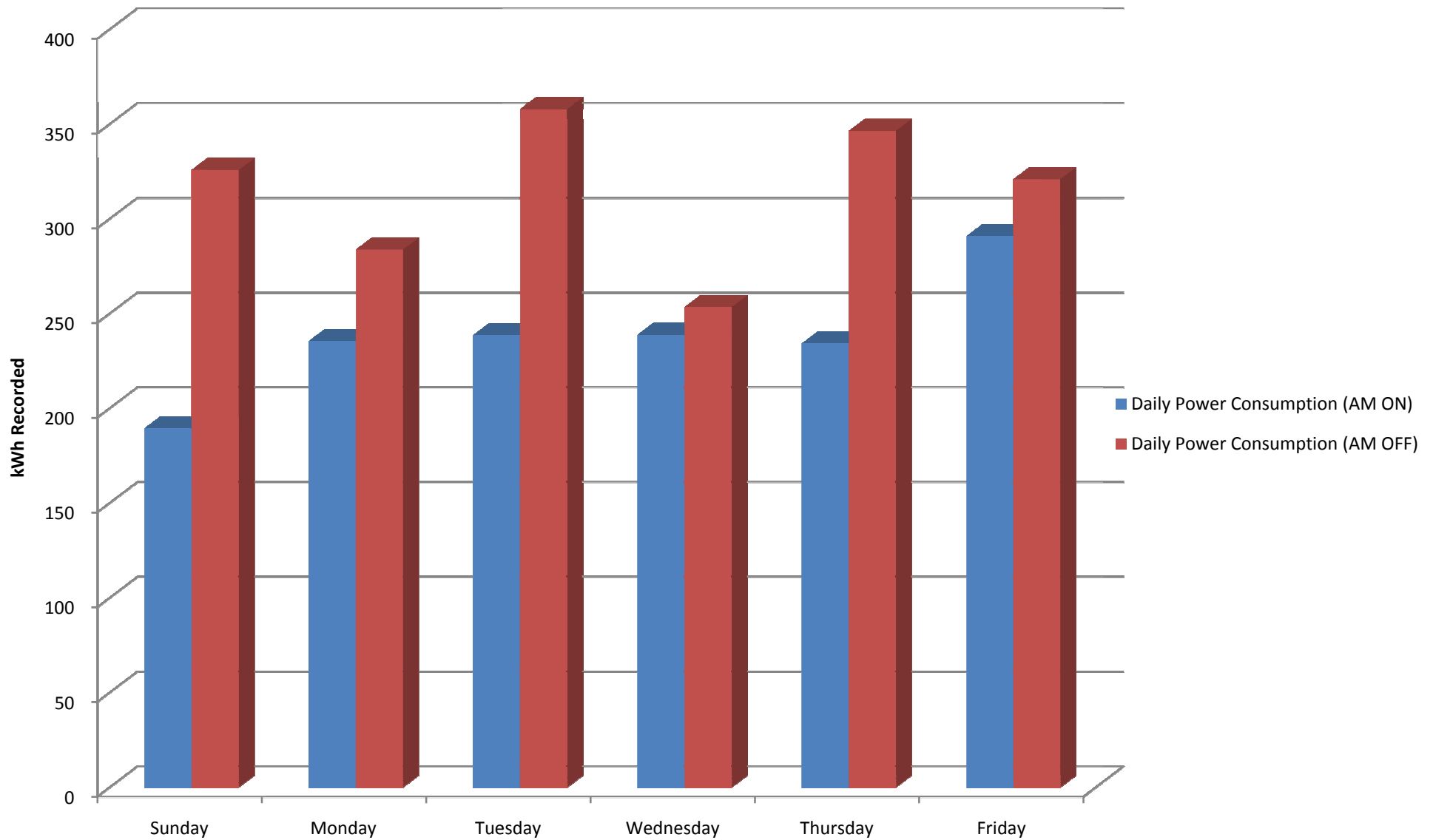


	Sunday	Monday	Tuesday	Wednesday	Thursday	Friday
■ Daily Ambient Temp (AM ON)	29.0	28.0	29.0	29.0	29.0	26.0
■ Daily Ambient Temp (AM OFF)	27.5	27.0	27.5	28.5	27.5	29.0
■ Daily RA Temp (AM ON)	27.8	27.3	27.6	27.6	27.8	27.1
■ Daily RA Temp (AM OFF)	27.7	27.1	27.1	26.3	27.0	27.2

Data recorded over 12 consecutive days (week 1 AM off) & week 2 EM ON)

Daily Power Consumption

Arcticmaster ON & Arcticmaster OFF



Data Recorded over 12 consecutive days (week one AM ON) (week 2 AM OFF)